

FUGIT Vanity
3-5011-xx

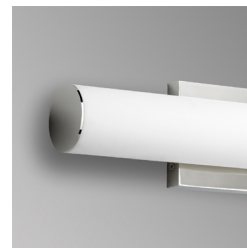
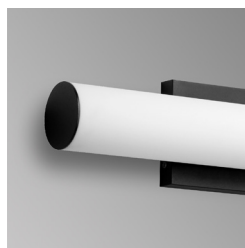
oxygen

FIXTURE TYPE _____

LOCATION _____

PROJECT _____

DATE _____



-24 Satin Nickel

-15 Black

-20 Polished Nickel

LIGHT SOURCE 1 x 13W LED, 3000K, CRI 90

LUMINAIRE POWER 15.5W at 120V

RATED LIFE 60000 hr RL

LUMEN OUTPUT Delivered: 1062 lm (LM-79)

INPUT VOLTAGE 120V, 60Hz

DRIVER OUTPUT 350mA, 15W max

DIMMING TRIAC Dimming

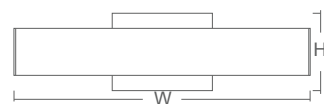
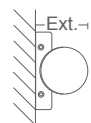
CONSTRUCTION Plated Steel and Acrylic

DIFFUSER - Matte White Acrylic

FINISHES Black (-15), Polished Nickel (-20), Satin Nickel (-24)

MOUNTING 4" Octagonal J-Box*
4"x4" Square J-Box* with single device mud ring
*Deep J-Box (Required to house driver)

STANDARDS ETL Dry/Damp listed, ADA Compliant, Conforms to UL STD 1598, Certified CAN/CSA, STD C22.2 No 250.0.



DIMENSIONS

W: 17.625"

H: 4.50"

Ext: 3.125"

M.C: 2.25" From Top of Fixture

Order example for standard fixture:

3-5011-xx (x-Voltage - xxx-Sequence # - xx-Finish)

